



## CAMERA INTEGRATION

# Enhance Fleet Safety and Efficiency with the Surfsight AI Dashcam

---

Advanced camera solutions for real-time monitoring, incident prevention and operational efficiency.

THE POWER TO PREDICT

# Camera Integration

Ctrack Crystal is designed to grow with your business. By activating integrations and Power-Ups, you can extend the platform's core capabilities and tailor it to your unique operational needs. These enhancements help unlock greater efficiency, deeper insights, and a more connected experience across your ecosystem – ensuring Crystal works harder and smarter for you.

Video telematics is a must-have for protecting your drivers and monitoring your vehicles. Powered by Optix, and combining cutting-edge camera technology with advanced telematics, these cameras provide a real-time, comprehensive view of activity inside and outside the vehicle.

Ctrack's Crystal platform seamlessly integrates Optix dashcam and ADAS technology, giving you all the tools needed to enhance safety, boost efficiency, and manage your fleet effectively. It's like having an extra set of eyes on the road, constantly monitoring driver behaviour, road incidents, and cargo status. Crystal simplifies this further by consolidating all these features into one user-friendly platform that can be customised to fit your business needs.

## The Power to Predict

Ctrack's video telematics technology goes beyond simple tracking and reporting. It offers the Power to Predict by helping prevent incidents before they occur. Integrating advanced telematics with our AI-powered dashcam provides a comprehensive real-time view of your vehicle's interior and exterior, supporting proactive monitoring and improved safety.



### Live Feed and Record Keeping

- Detect risky driver behaviour and empower self-correction with in-cab alerts.
- Receive alerts for distracted driving, speeding, or aggressive manoeuvres.
- Use captured footage to improve driver training and reduce accidents.



### Remote Access and Monitoring

- Access live video and monitor operations from a distance.
- Ensure security with zone management.
- Activate emergency response plans if unusual activities are detected.



### Alerts and Warnings

- Real-time audio and visual alerts for drivers to correct risky behaviours.
- Instantly retrievable video footage for transparent reporting and compliance.
- Share real-time updates on delivery status and disruptions with customers.



### Comprehensive Event Capture

- Automatic capture and download of video events.
- Historical video replay.
- Evidence collection to determine true fault and liability in accidents.

## DASHCAM FEATURES

# The Powerful Surfsight AI Dashcam

Ctrack utilises Optix camera technology, combining cutting-edge AI with practical surveillance to enhance fleet safety through proactive risk detection and comprehensive recording.

### On-Demand Video

Live video access at the click of a button.

### Machine Vision and AI

Proactively detects and alerts on driving risks including cellphone use, no seatbelt, and distracted driving.

### Automatic Event Uploads

Automatically uploads driving events to the cloud for easy access and review.

### Event Trigger Button

Communicate events from the dashcam button.

### Integrated Microphone

Configure the dashcam to capture in-cab audio when triggered.

### Night Illumination

Features six high-lumen infrared lights for clear nighttime footage.

### Extensive Video Storage

Offers up to 200 hours of video footage storage, enabling detailed review of recorded data.

### Visual and Audio Driver Risk Alerts

Informs drivers of risky behaviours with visual and audio alerts, enhancing in-cab coaching.

### Dual View

Provides footage from both road facing and driver-facing lens.

### Auxiliary Cameras

Supports up to four additional cameras.



POWERED BY

**optix**  
SAFELY HOME

## UNLEASHING THE POWER OF MACHINE VISION AND AI

### What is MV+AI?

MV

#### Machine Vision

MV technology enables computers to interpret images and videos. In fleet management, it detects objects, analyses driver behaviour and assesses road conditions to enhance safety and efficiency.



AI

#### Artificial Intelligence

AI simulates human intelligence, learning from data to make decisions and improve over time. In fleet management, it analyses MV data, predicts issues and provides insights to optimise performance.



MV

+

AI

Combined, MV and AI capture, interpret and learn from data to predict and prevent risks. Fleets can detect issues in real time, take immediate action and improve safety, efficiency and costs.

### ***Enhance Fleet Safety and Efficiency with Advanced Machine Vision and Artificial Intelligence Technology.***

The Crystal platform integrates cutting-edge Machine Vision and Artificial Intelligence (MV+AI) technology into a comprehensive telematics platform. With MV+AI, fleets can proactively detect and address distracted or unsafe driving behaviours in real-time, ensuring enhanced safety, increased efficiency and reduced operational costs.



Improved Safety



Increased Fleet Efficiency



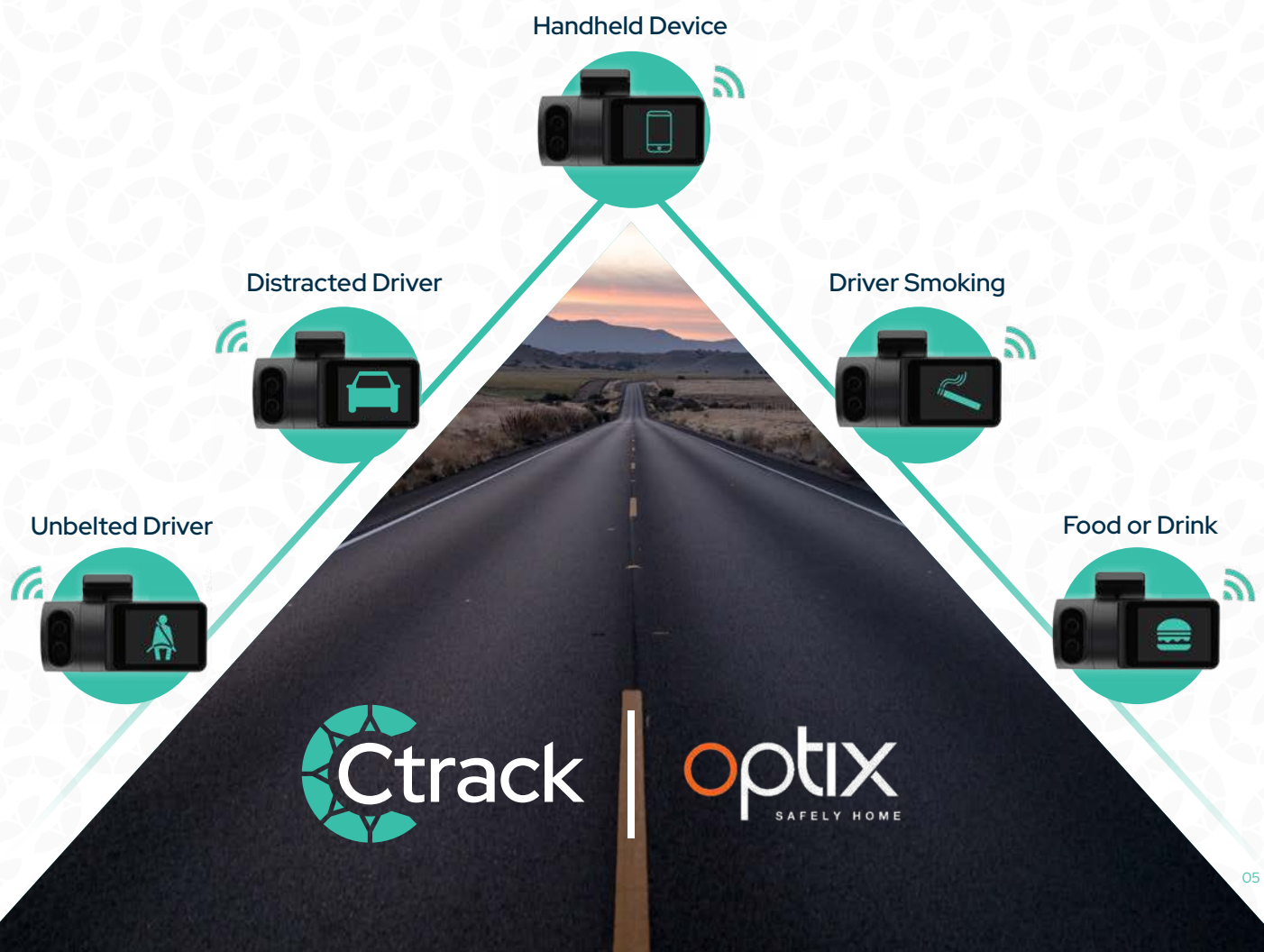
Decrease in Liability and Overall Costs

## Using Data to Make Smarter Decisions

Ctrack utilises advanced MV+AI technology to deliver real-time, AI-driven risk monitoring by collecting high-quality data. Combining AI with human review, it flags and catalogues behaviours to ensure accuracy of results. With data from thousands of vehicles every day, the technology continuously learns and improves. Ctrack's continuous innovations and easy-to-integrate API enhances your telematics seamlessly.

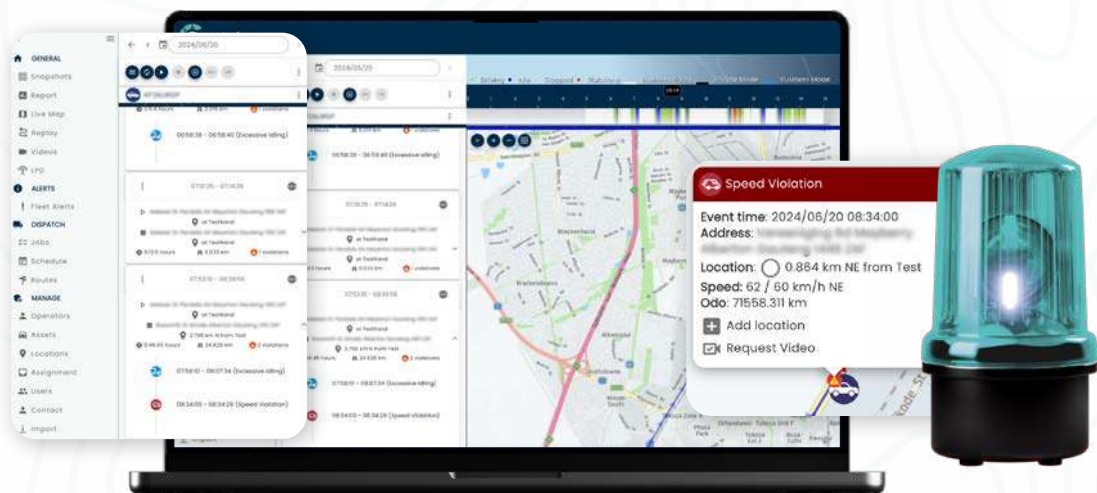
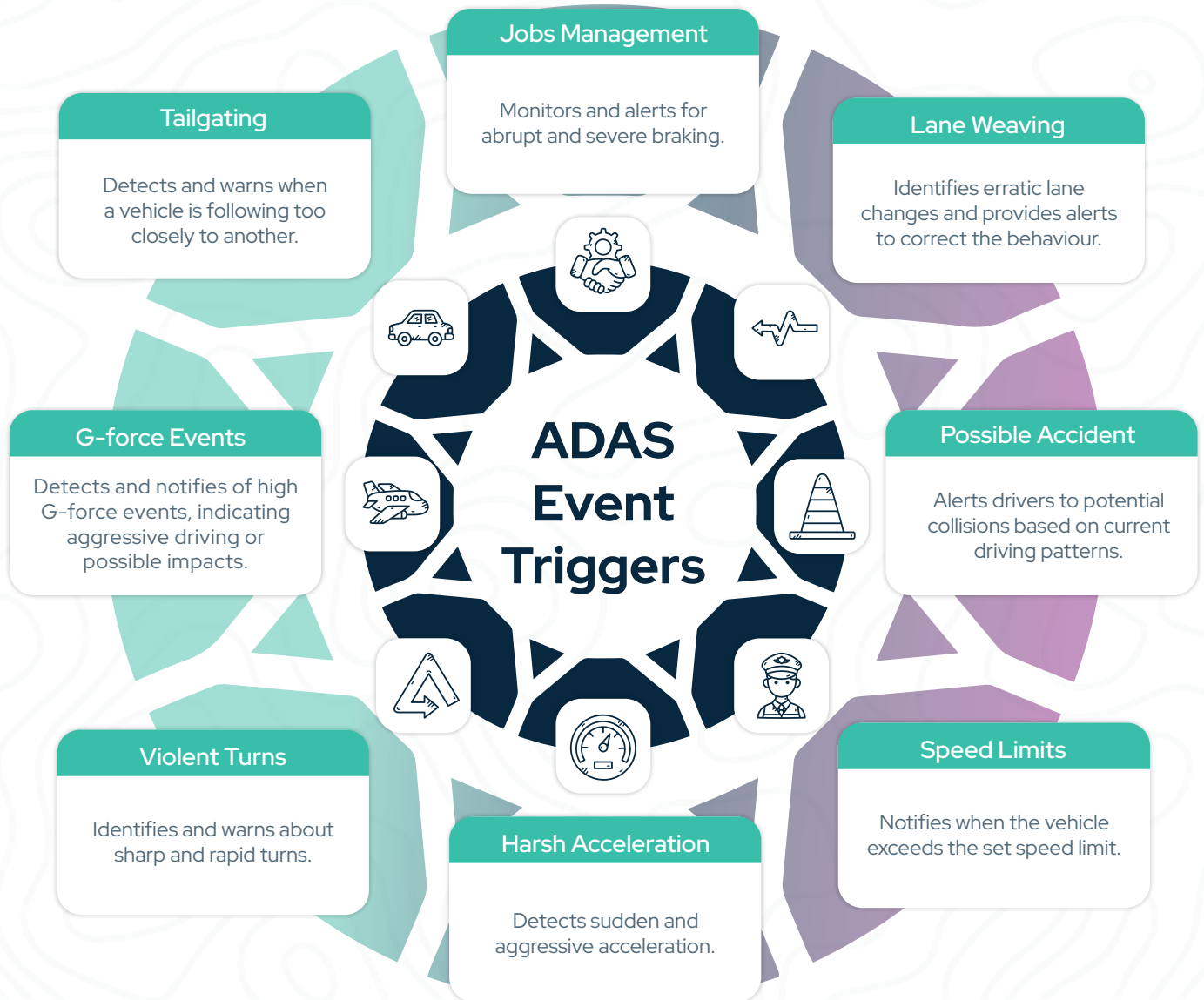
## What Insights will MV+AI Uncover?

MV+AI analyses data in real-time to detect risky driving. When confidence is high, it triggers an in-cab audio and visual alert, allowing drivers to adjust before an incident. If the risk continues, the system records video evidence and notifies the fleet manager of the event.



## Advanced Driver Assistance Systems (ADAS)

These notifications help drivers correct their behaviour in real-time, reducing the risk of accidents and improving overall fleet safety.





## **The Power to Predict. The Insight to Protect.**

A Partnership to get everyone safely home.





Ctrack has been at the forefront of telematics and Fleet Asset Management for 40 years, delivering cutting-edge solutions that drive efficiency, enhance safety, and optimise operations. As we celebrate this milestone, we remain committed to innovation, continuously evolving our technology to meet the changing demands of businesses across industries. Our legacy is built on reliability, adaptability, and a deep understanding of Fleet Asset Management. With Crystal, our next-generation modular platform, we empower businesses with real-time data, predictive insights, and AI-driven analytics—ensuring smarter decision-making and operational excellence.



---

## CONTACT

### Address

Ctrack Building A, 9 Regency Drive, Route 21  
Corporate Park, Irene Ext 30, Centurion, 0157  
South Africa

### Phone

+27 (0) 860 333 444

### Online

Email: [info@ctrack.com](mailto:info@ctrack.com)  
Website: [www.ctrack.com](http://www.ctrack.com)

---